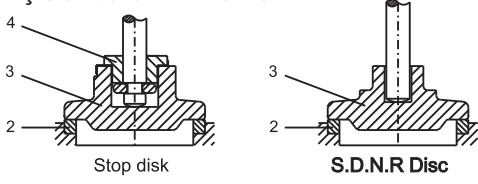


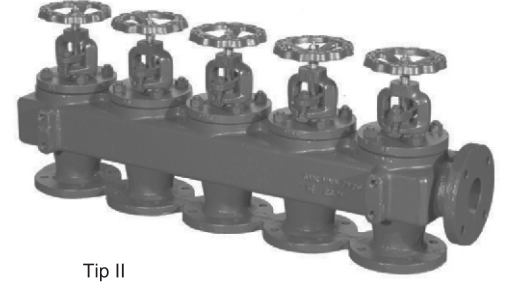
\* Flanş standardı : DIN EN 1092-2 PN 10 (DIN 2501)

\* Basınç standardı : 16 Bar.



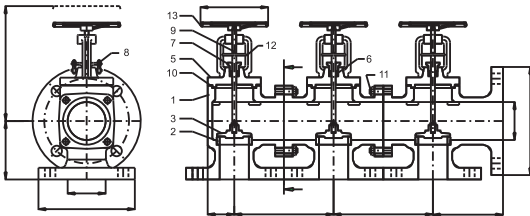
Tip I

Tip II

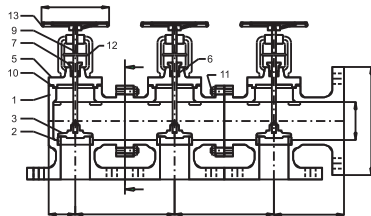


No.	Part Name	Material
1	Gövde	GG 25 GGG 40,3 GSC-25 Bronz
2	Yatak Disk (<50)	G-CuSn5ZnPb G-CuSn5ZnPb
3	Disk (>65) Disk yüzey	GG 25 G-CuSn5ZnPb
4	Disk somunu	G-CuSn5ZnPb
5	Kapak	GG 25
6	Conta	Grafit
7	Baskı tapası	GGG 40.3
8	Tcivata,somun	Çelik
9	Mil	CuZn35Ni
10	Conta	Karbon (Astbestsiz)
11	Civata,Somun	Çelik
12	Gösterge	Çelik
13	Volan	GG 25

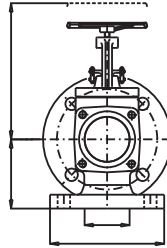
No.	Part Name	Material
1	Gövde	GG 25 GGG 40,3 GSC-25 Bronz
2	Yatak Disk (<50)	X5CrNi 18 9 X5CrNi 18 9
3	Disk (>65) Disk yüzey	GG 25 X5CrNi 18 9
4	Disk somunu	X5CrNi 18 9
5	Kapak	GG 25
6	Conta	Grafit
7	Baskı tapası	GGG 40.3
8	T civata,somun	Çelik
9	Mil	X5CrNi 18 9
10	Conta	Karbo (Astbestsiz)
11	Civata,Somun	Çelik
12	Gösterge	Çelik
13	Volan	GG 25



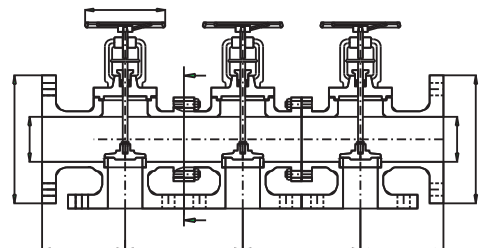
Tip I



Figur 440  
Figur 440LK



Tip II



Figur 441  
Figur 441LK

DN	50	50	65	65
ØD	165	165	185	185
DN1	50	65	65	80
ØD1	165	185	185	200
L1	170	170	190	190
L2	57	57	57	57
L3	120	120	130	130
ØR	160	160	180	180
H1	100	100	110	110
H (Açık)	266	266	285	285

DN	50	50	65	65
ØD	165	165	185	185
DN1	50	65	65	80
ØD1	165	185	185	200
L1	170	170	190	190
L2	120	120	130	130
ØR	160	160	180	180
H1	100	100	110	110
H (Açık)	266	266	285	285